

"CONCOURSE QUALITY, HOBBYIST PRICE"

**MartiAutoWorks**

www.martiauto.com

12007 W. PEORIA AVENUE

EL MIRAGE, AZ 85335

(623) 935-2558

(623) 935-2579 Fax

DELUXE MARTI REPORT



Proud to display this symbol

Copyright Kevin Marti 2012

Thank you for your interest in our services. We have determined the following information for your car from the Ford Database we have:

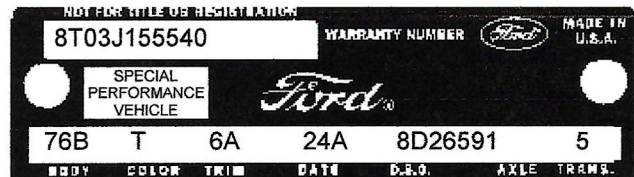
VEHICLE ORDER IMAGE:

123456789012345678901234567890123456789012345678901234567890  
8T03J155540 T 6A 41 24A1870 2659 KMQA 3 5 5 E D 2 D 1 7 84X999 B 2

DOOR DATA PLATE INFORMATION

Serial Number 8T03J155540-01870

8 1968  
T Built at Metuchen  
03 Shelby Convertible  
J 302-4V Engine  
55,540<sup>th</sup> Mustang scheduled for production at Metuchen  
1,870<sup>th</sup> Shelby scheduled for production  
  
76B Shelby Convertible  
T Candyapple Red Paint Ford #2008-A  
6A Black Décor Bucket Seats  
24A Scheduled for build January 24, 1968  
8D2659 Home Office Reserve ordering district under  
order number 2659  
1 3.89 standard axle ratio  
5 Four-Speed Manual Transmission



IMPORTANT DATES:

ORDER RECEIVED: 12/20/67  
CAR SERIALIZED: 01/11/68  
BUCKED: 01/23/68  
SCHEDULED FOR BUILD 01/24/68  
ACTUALLY BUILT 01/26/68  
RELEASED: 01/26/68  
SOLD: --

ORDER TYPE: RETAIL  
DSO ITEM # 1870  
DEALER: 54A003  
MCFAYDENS INC  
20<sup>TH</sup> & HOWARD STREETS  
OMAHA NE 68102

Your vehicle was ordered with the following options:

White Power Convertible Top w/ Glass Backlite  
Extra Cooling Package  
Visibility Group  
Wheel Lip Moulding  
Power Steering  
Power Front Disc Brakes  
Tilt-Away Steering Column  
AM Radio  
Interior Décor Group  
Heavy Duty Battery  
Tachometer and Trip Odometer

Your car was actually produced on January 26 1968, two days behind schedule.

*Kevin Marti*

Kevin Marti

STATISTICS

YOUR CAR WAS 1 OF:

252 PAINTED THIS COLOR  
222 WITH THIS PAINT/TRIM COMBINATION  
214 WITH THIS ENGINE/TRANSMISSION  
404 ORDERED AS GT-350 CARS  
893 ORDERED WITH WHITE TOP

FOR THE 1968 SHELBY CONVERTIBLE

For Mustang, Thunderbird, Cougar, Falcon, Fairlane, Lincoln, Torino, and other Ford Products from 1954-1989